

# FOR SALE - 35+ acres

OLD WINDER HWY. north of Braselton  
Hall County, Georgia

*Zoned (PCD)  
Planned Community Development  
located within the  
Gateway Corridor Overlay District*

*Demographics (5-Mile):  
(2015 Projections)  
Population: 56,582  
Households: 17,993  
Avg. HH Income: \$80,953 (2010 Est.)*

*2007 Georgia DOT Traffic Counts:  
Old Winder Hwy. north of site: 5,650  
Hwy. 53 north of site: 14,820  
Thompson Mill Road: 8,140*



*Heritage Commercial Realty, Inc.*

*5579-B Chamblee-Dunwoody Road  
Suite 225  
Atlanta, GA 30338  
Phone: 770/395-9111  
Fax: 770/394-0867  
Email: hcrinc@comcast.net*



Retail: 17 acres; Office/Warehouse: 18 acres

Prices are as follows: \$125,000/acre for entire tract; \$100,000/acre for the tract zoned office/warehouse and located west of the stream; \$200,000/acre for the tract zoned retail/commercial and located east of the stream; individual lots shall be priced based upon location and size.

FOR ADDITIONAL INFORMATION, CONTACT:  
**JERRY PRESCOTT**  
770/395-9111

The information contained herein is from sources believed to be reliable. No independent investigation of the property or the information contained herein has been made and no representation is made as to the accuracy or completeness thereof. Property and terms are subject to prior sale, withdrawal, errors, omissions and change without notice. (309)

## MARKET OVERVIEW

### **35+ acres on Old Winder Hwy. (Route 211) just north of Braselton**

Located in Hall County's Gateway Overlay District just 3 miles from I-85 and approximately 6.8 miles from I-985, this tract of land has tremendous upside potential. Hwy. 211 is a major north/south traffic artery spawning fantastic residential, office and retail development.

The site is located near the new Northeast Georgia Medical Center's 119-acre campus. River Place Campus is the site of the proposed 100-bed Northeast Georgia Medical Center on State Route 347 (Thompson Mill Road). The Medical Plaza 1 building currently houses Urgent Care Braselton, HealthLife Lab, the Braselton Clinic, Advantage Sports Medicine, Imaging Center and The Rehabilitation Institute along with numerous physicians. The hospital is in the process of obtaining their certificate of need with a proposed opening for 2012 to coincide with the upgrading of 4 lanes and a realignment of Thompson Mill Road and Old Winder Hwy.

Reunion opened in 2001 and is a John Wieland housing development which includes an 18-hole golf course along with an extensive clubhouse and services. There will be approximately 820 homes at build-out with housing costs ranging \$250,000 to \$400,000.

The Del Webb Community known as the Village at Deaton Creek is off and running. Geared for adults 55 and over, the community offers a 35,000 square foot clubhouse with an indoor pool, 8,000 square foot fitness center, library, demonstration kitchen, arts and craft studio. Additional amenities include an outdoor pool, miles of walking trails, tennis courts, bocce courts, a softball field and dog park. Build-out is 1,200 homes.

The proposed Thompson Mill Village Mixed-Use Development will contain 424,200 square foot of retail, 359,200 square feet of office and 657 residences and is situated at the corner of Old Winder Hwy. and Thompson Mill Road.


Developed by Sivica, Mulberry Park, located on Old Winder Hwy., is a master planned community with 495 housing lots and commercial out parcels.

This area will be served by the Spout Springs reuse sewer facility which currently has a permit for 750,000 gallon-per-day capacity; the county is working on increasing the permit usage to 1.6 million gallons per day thus enabling extensive future growth. The property is also near the soon-to-be relocated Thompson Mill Road (GA 347) and GA 211 intersection.

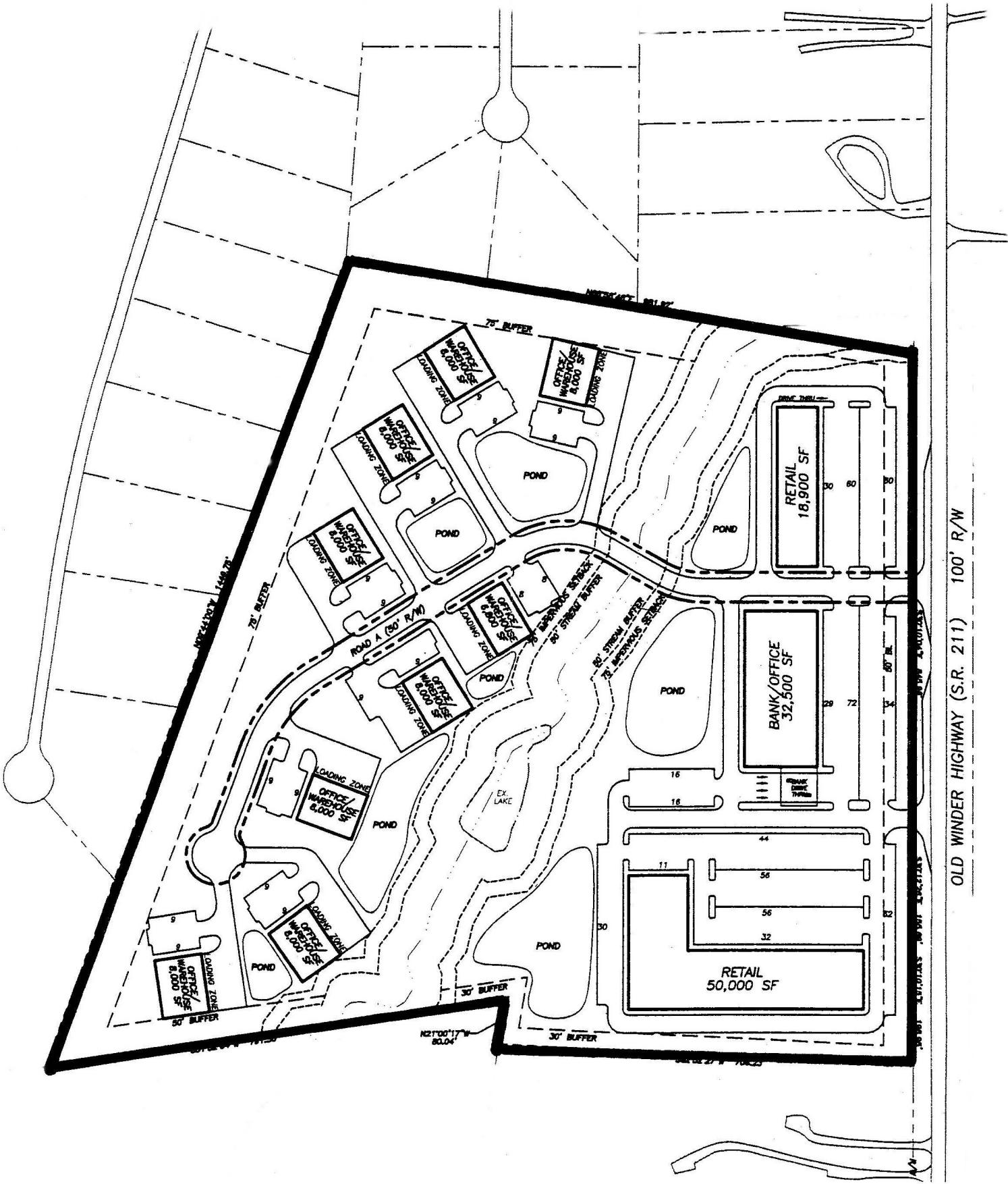
The site is also near Chateau Elan, Road Atlanta Raceway and only 12 miles from the Mall of Georgia.

  
Suite 225  
Phone 770/395-9111

Heritage Commercial Realty, Inc.  
5579-B Chamblee-Dunwoody Road  
Fax 770/394-0867

  
Atlanta, Georgia 30338  
Email: hcrinc@comcast.net

# 5490 Old Winder Hwy., Braselton, Hall County, Georgia



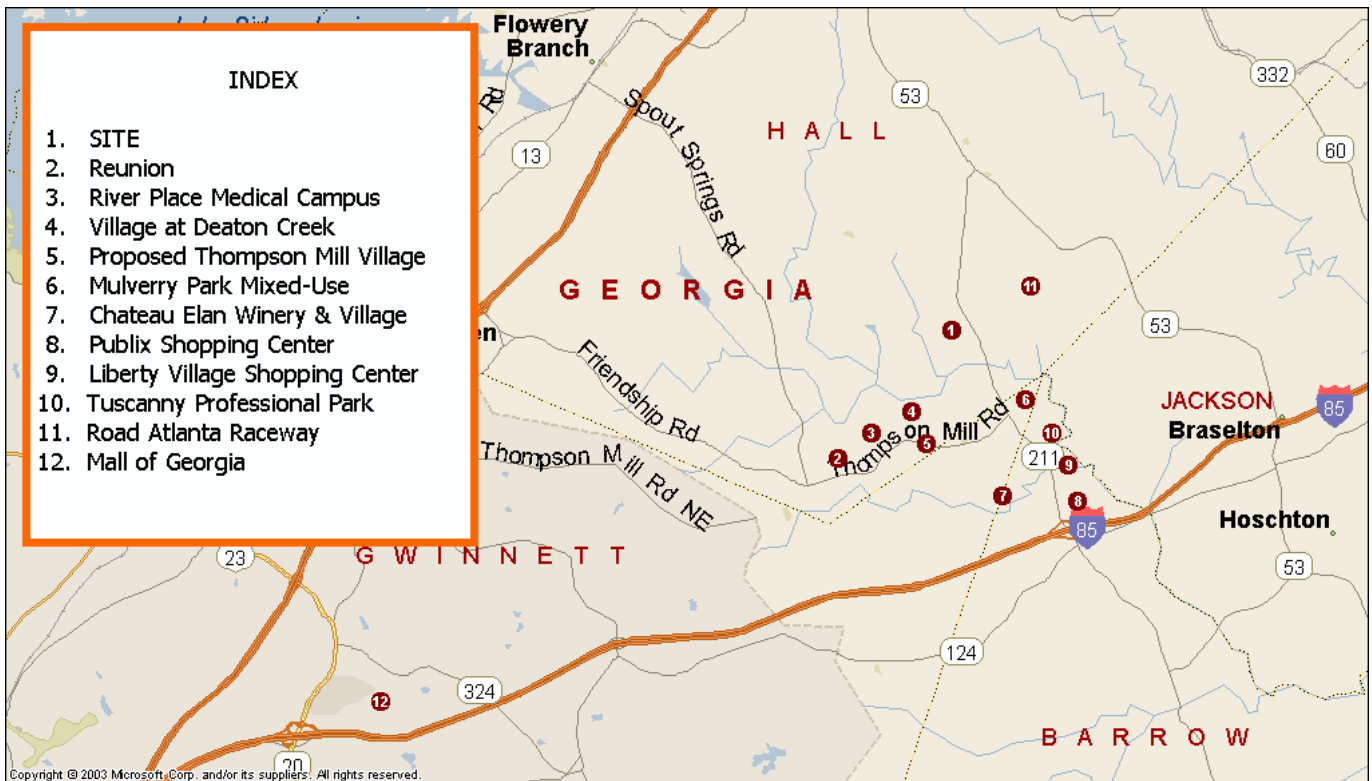
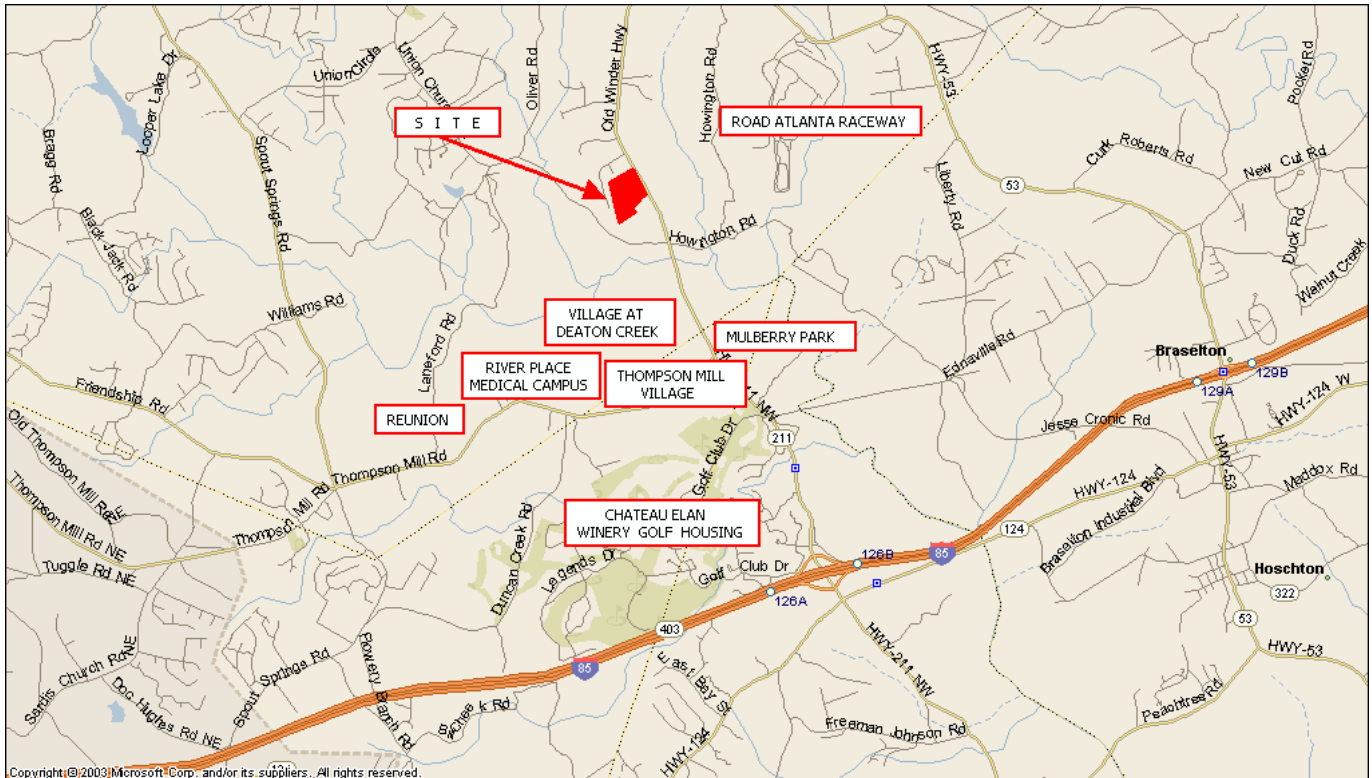
OLD WINDER HIGHWAY (S.R. 211) 100' R/W

*HCB*  
 Suite 225  
 Phone 770/395-9111

Heritage Commercial Realty, Inc.  
 5579-B Chamblee-Dunwoody Road  
 Fax 770/394-0867

*HCB*  
 Atlanta, Georgia 30338  
 Email: hcrinc@comcast.net

# 5490 Old Winder Hwy., Braselton, Hall County, Georgia



*HC*  
 Suite 225  
 Phone 770/395-9111

Heritage Commercial Realty, Inc.  
 5579-B Chamblee-Dunwoody Road  
 Fax 770/394-0867

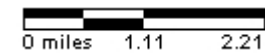
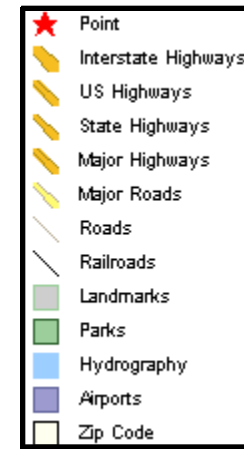
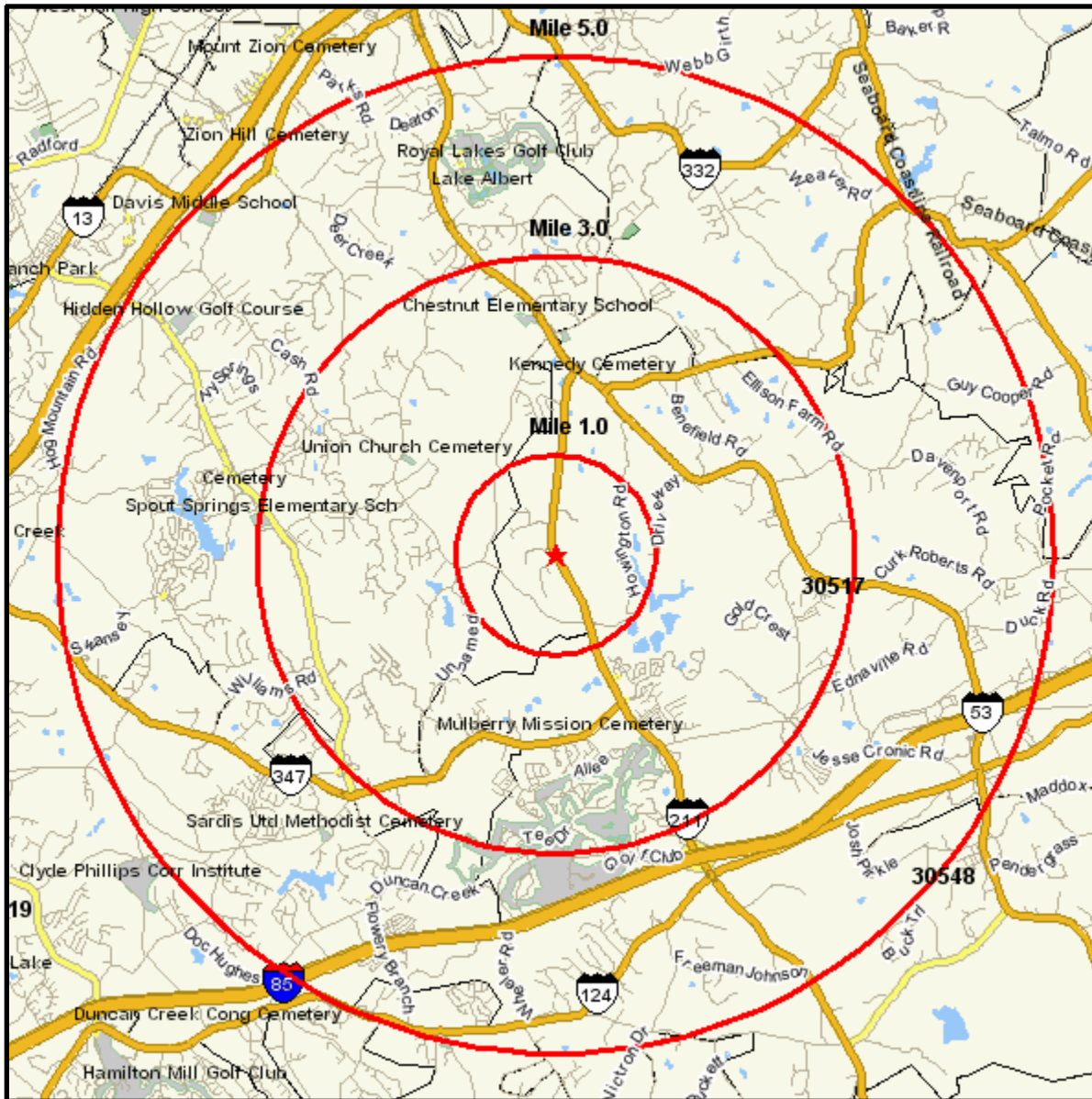
*HC*  
 Atlanta, Georgia 30338  
 Email: hcrinc@comcast.net

# Area Map

Prepared For: Heritage Commercial Realty, Inc.

Order #: 968978097  
Site: 01

BRASELTON, GA 30517  
Coord: 34.140736, -83.837231  
Radius - See Appendix for Details



## Pop-Facts: Demographic Quick Facts Report

**Radius 1: BRASELTON, GA 30517, aggregate**

**Radius 2: BRASELTON, GA 30517, aggregate**

**Radius 3: BRASELTON, GA 30517, aggregate**

Description	0.00 - 1.00 miles		0.00 - 3.00 miles		0.00 - 5.00 miles	
	Radius 1	%	Radius 2	%	Radius 3	%
<b>Population</b>						
2015 Projection	1,104		18,057		56,582	
2010 Estimate	940		15,420		48,521	
2000 Census	481		8,034		26,475	
1990 Census	201		3,609		12,292	
Growth 1990 - 2000	139.30%		122.61%		115.38%	
<b>Households</b>						
2015 Projection	337		5,667		17,993	
2010 Estimate	292		4,903		15,620	
2000 Census	156		2,636		8,784	
1990 Census	66		1,209		4,168	
Growth 1990 - 2000	136.36%		118.03%		110.75%	
<b>2010 Est. Population by Single Classification Race</b>						
	940		15,420		48,521	
White Alone	816	86.81	13,303	86.27	41,259	85.03
Black or African American Alone	50	5.32	1,003	6.50	3,322	6.85
American Indian and Alaska Native Alone	1	0.11	37	0.24	154	0.32
Asian Alone	6	0.64	182	1.18	738	1.52
Native Hawaiian and Other Pacific Islander Alone	1	0.11	14	0.09	51	0.11
Some Other Race Alone	45	4.79	582	3.77	2,083	4.29
Two or More Races	21	2.23	300	1.95	914	1.88
<b>2010 Est. Population Hispanic or Latino</b>						
	940		15,420		48,521	
Hispanic or Latino	89	9.47	1,192	7.73	4,551	9.38
Not Hispanic or Latino	851	90.53	14,229	92.28	43,969	90.62
<b>2010 Tenure of Occupied Housing Units</b>						
	292		4,903		15,620	
Owner Occupied	262	89.73	4,298	87.66	13,562	86.82
Renter Occupied	30	10.27	605	12.34	2,058	13.18
<b>2010 Average Household Size</b>						
	3.19		3.08		3.04	

## Pop-Facts: Demographic Quick Facts Report

**Radius 1: BRASELTON, GA 30517, aggregate**

**Radius 2: BRASELTON, GA 30517, aggregate**

**Radius 3: BRASELTON, GA 30517, aggregate**

Description	0.00 - 1.00 miles		0.00 - 3.00 miles		0.00 - 5.00 miles	
	Radius 1	%	Radius 2	%	Radius 3	%
<b>2010 Est. Households by Household Income</b>	292		4,903		15,620	
Income Less than \$15,000	16	5.48	312	6.36	936	5.99
Income \$15,000 - \$24,999	6	2.05	192	3.92	793	5.08
Income \$25,000 - \$34,999	17	5.82	337	6.87	1,184	7.58
Income \$35,000 - \$49,999	49	16.78	758	15.46	2,287	14.64
Income \$50,000 - \$74,999	74	25.34	1,129	23.03	3,578	22.91
Income \$75,000 - \$99,999	54	18.49	867	17.68	2,864	18.34
Income \$100,000 - \$124,999	33	11.30	590	12.03	1,889	12.09
Income \$125,000 - \$149,999	21	7.19	324	6.61	921	5.90
Income \$150,000 - \$199,999	16	5.48	223	4.55	597	3.82
Income \$200,000 - \$499,999	6	2.05	146	2.98	480	3.07
Income \$500,000 and over	1	0.34	26	0.53	89	0.57
<b>2010 Est. Average Household Income</b>	\$82,698		\$82,213		\$80,953	
<b>2010 Est. Median Household Income</b>	\$69,667		\$68,883		\$68,228	
<b>2010 Est. Per Capita Income</b>	\$25,859		\$26,246		\$26,139	
<b>2010 Median HH Inc by Single Race Class or Ethn</b>						
White Alone	71,196		69,737		69,281	
Black or African American Alone	52,292		77,500		60,341	
American Indian and Alaska Native Alone	0		53,571		48,558	
Asian Alone	42,500		61,364		67,325	
Native Hawaiian and Other Pacific Islander Alone	0		66,667		68,750	
Some Other Race Alone	42,500		44,620		53,371	
Two or More Races	42,500		51,389		56,055	
Hispanic or Latino	50,625		46,618		53,843	
Not Hispanic or Latino	70,599		69,938		69,585	

## Executive Summary

### Radius 1: BRASELTON, GA 30517, 0.00 - 1.00 Miles, Total

---



- The population in this area is estimated to change from 481 to 940, resulting in a growth of 95.4% between 2000 and the current year. Over the next five years, the population is projected to grow by 17.4%.

The population in the United States is estimated to change from 281,421,906 to 309,038,974, resulting in a growth of 9.8% between 2000 and the current year. Over the next five years, the population is projected to grow by 4.1%.

The current year median age for this area is 31.7, while the average age is 32.1. Five years from now, the median age is projected to be 32.8.

The current year median age for the United States is 37.0, while the average age is 37.7. Five years from now, the median age is projected to be 37.8.

Of this area's current year estimated population:

86.7% are White Alone, 5.3% are Black or African Am. Alone, 0.1% are Am. Indian and Alaska Nat. Alone, 0.7% are Asian Alone, 0.1% are Nat. Hawaiian and Other Pacific Isl. Alone, 4.8% are Some Other Race, and 2.3% are Two or More Races.

Of the United States's current year estimated population:

72.3% are White Alone, 12.4% are Black or African Am. Alone, 0.9% are Am. Indian and Alaska Nat. Alone, 4.4% are Asian Alone, 0.2% are Nat. Hawaiian and Other Pacific Isl. Alone, 6.8% are Some Other Race, and 3.0% are Two or More Races.

This area's current estimated Hispanic or Latino population is 9.4%, while the United States current estimated Hispanic or Latino population is 15.8%.

---



- The number of households in this area is estimated to change from 156 to 292, resulting in an increase of 87.2% between 2000 and the current year. Over the next five years, the number of households is projected to increase by 15.4%.

The number of households in the United States is estimated to change from 105,480,101 to 116,136,617, resulting in an increase of 10.1% between 2000 and the current year. Over the next five years, the number of households is projected to increase by 4.1%.

---



- The average household income is estimated to be \$82,698 for the current year, while the average household income for the United States is estimated to be \$71,071 for the same time frame.

The average household income in this area is projected to change over the next five years, from \$82,698 to \$91,485.

The average household income in the United States is projected to change over the next five years, from \$71,071 to \$77,465.

The current year estimated per capita income for this area is \$25,859, compared to an estimate of \$27,034 for the United States as a whole.

---

## Executive Summary

### Radius 1: BRASELTON, GA 30517, 0.00 - 1.00 Miles, Total



■ For this area, 51.9% of the population is estimated to be employed and age 16 and over for the current year. The employment status of this labor force is as follows:

0.0% are in the Armed Forces, 73.3% are employed civilians, 2.5% are unemployed civilians, and 24.2% are not in the labor force.

For the United States, 47.3% of the population is estimated to be employed and age 16 and over for the current year. The employment status of this labor force is as follows:

0.5% are in the Armed Forces, 61.0% are employed civilians, 4.1% are unemployed civilians, and 34.4% are not in the labor force.

For this area, 51.9% of the population is estimated to be employed and age 16 and over for the current year. The occupational classifications are as follows:

27.7% have occupation type blue collar, 56.6% are white collar, and 15.7% are Service & farm workers.

For the United States, 47.3% of the population is estimated to be employed and age 16 and over for the current year. The occupational classifications are as follows:

22.1% have occupation type blue collar, 60.2% are white collar, and 17.6% are Service & farm workers.

For the civilian employed population age 16 and over in this area, it is estimated that they are employed in the following occupational categories:

2.3% are in Architecture and Engineering, 2.4% are in Arts, Entertainment and Sports, 4.3% are in Business and Financial Operations, 3.3% are in Computers and Mathematics, 5.7% are in Education, Training and Libraries, 3.9% are in Healthcare Practitioners and Technicians, 0.8% are in Healthcare Support, 0.0% are in Life, Physical and Social Sciences, 11.7% are in Management, 15.4% are in Office and Administrative Support.

0.2% are in Community and Social Services, 7.7% are in Food Preparation and Serving, 0.0% are in Legal Services, 1.0% are in Protective Services, 7.3% are in Sales and Related Services, 2.5% are in Personal Care Services.

3.4% are in Building and Grounds Maintenance, 7.9% are in Construction and Extraction, 0.3% are in Farming, Fishing and Forestry, 5.1% are in Maintenance and Repair, 7.9% are in Production, 6.9% are in Transportation and Moving.

For the civilian employed population age 16 and over in the United States, it is estimated that they are employed in the following occupational categories:

1.9% are in Architecture and Engineering, 1.9% are in Arts, Entertainment and Sports, 4.4% are in Business and Financial Operations, 2.4% are in Computers and Mathematics, 5.8% are in Education, Training and Libraries, 5.1% are in Healthcare Practitioners and Technicians, 2.3% are in Healthcare Support, 0.9% are in Life, Physical and Social Sciences, 9.6% are in Management, 14.2% are in Office and Administrative Support.

1.6% are in Community and Social Services, 5.4% are in Food Preparation and Serving, 1.1% are in Legal Services, 2.2% are in Protective Services, 11.3% are in Sales and Related Services, 3.3% are in Personal Care Services.

3.9% are in Building and Grounds Maintenance, 6.0% are in Construction and Extraction, 0.7% are in Farming, Fishing and Forestry, 3.4% are in Maintenance and Repair, 6.5% are in Production, 6.1% are in Transportation and Moving.

## Executive Summary

### Radius 1: BRASELTON, GA 30517, 0.00 - 1.00 Miles, Total

---



- Currently, it is estimated that 3.7% of the population age 25 and over in this area had earned a Master's Degree, 1.9% had earned a Professional School Degree, 0.6% had earned a Doctorate Degree and 12.2% had earned a Bachelor's Degree.

In comparison, for the United States, it is estimated that for the population over age 25, 7.0% had earned a Master's Degree, 1.9% had earned a Professional School Degree, 1.1% had earned a Doctorate Degree and 17.4% had earned a Bachelor's Degree.

---



- Most of the dwellings in this area (89.6%) are estimated to be Owner-Occupied for the current year. For the entire country the majority of the housing units are Owner-Occupied (66.8%).

The majority of dwellings in this area are estimated to be structures of 1 Unit Detached for the current year. In the United States, the majority of dwellings are estimated to be structures of 1 Unit Detached for the same year.

The majority of housing units in this area (48.6%) are estimated to have been Housing Unit Built 2000 or later for the current year.

The majority of housing units in the United States (16.2%) are estimated to have been Housing Unit Built 1970 to 1979 for the current year.

## Executive Summary

### Radius 2: BRASELTON, GA 30517, 0.00 - 3.00 Miles, Total

---



- The population in this area is estimated to change from 8,034 to 15,420, resulting in a growth of 91.9% between 2000 and the current year. Over the next five years, the population is projected to grow by 17.1%.

The population in the United States is estimated to change from 281,421,906 to 309,038,974, resulting in a growth of 9.8% between 2000 and the current year. Over the next five years, the population is projected to grow by 4.1%.

The current year median age for this area is 33.3, while the average age is 33.2. Five years from now, the median age is projected to be 34.1.

The current year median age for the United States is 37.0, while the average age is 37.7. Five years from now, the median age is projected to be 37.8.

Of this area's current year estimated population:

86.3% are White Alone, 6.5% are Black or African Am. Alone, 0.2% are Am. Indian and Alaska Nat. Alone, 1.2% are Asian Alone, 0.1% are Nat. Hawaiian and Other Pacific Isl. Alone, 3.8% are Some Other Race, and 1.9% are Two or More Races.

Of the United States's current year estimated population:

72.3% are White Alone, 12.4% are Black or African Am. Alone, 0.9% are Am. Indian and Alaska Nat. Alone, 4.4% are Asian Alone, 0.2% are Nat. Hawaiian and Other Pacific Isl. Alone, 6.8% are Some Other Race, and 3.0% are Two or More Races.

This area's current estimated Hispanic or Latino population is 7.7%, while the United States current estimated Hispanic or Latino population is 15.8%.

---



- The number of households in this area is estimated to change from 2,636 to 4,903, resulting in an increase of 86.0% between 2000 and the current year. Over the next five years, the number of households is projected to increase by 15.6%.

The number of households in the United States is estimated to change from 105,480,101 to 116,136,617, resulting in an increase of 10.1% between 2000 and the current year. Over the next five years, the number of households is projected to increase by 4.1%.

---



- The average household income is estimated to be \$82,213 for the current year, while the average household income for the United States is estimated to be \$71,071 for the same time frame.

The average household income in this area is projected to change over the next five years, from \$82,213 to \$89,239.

The average household income in the United States is projected to change over the next five years, from \$71,071 to \$77,465.

The current year estimated per capita income for this area is \$26,246, compared to an estimate of \$27,034 for the United States as a whole.

---

## Executive Summary

### Radius 2: BRASELTON, GA 30517, 0.00 - 3.00 Miles, Total



■ For this area, 50.2% of the population is estimated to be employed and age 16 and over for the current year. The employment status of this labor force is as follows:

0.0% are in the Armed Forces, 68.7% are employed civilians, 2.4% are unemployed civilians, and 28.9% are not in the labor force.

For the United States, 47.3% of the population is estimated to be employed and age 16 and over for the current year. The employment status of this labor force is as follows:

0.5% are in the Armed Forces, 61.0% are employed civilians, 4.1% are unemployed civilians, and 34.4% are not in the labor force.

For this area, 50.2% of the population is estimated to be employed and age 16 and over for the current year. The occupational classifications are as follows:

27.6% have occupation type blue collar, 58.5% are white collar, and 13.9% are Service & farm workers.

For the United States, 47.3% of the population is estimated to be employed and age 16 and over for the current year. The occupational classifications are as follows:

22.1% have occupation type blue collar, 60.2% are white collar, and 17.6% are Service & farm workers.

For the civilian employed population age 16 and over in this area, it is estimated that they are employed in the following occupational categories:

1.8% are in Architecture and Engineering, 1.7% are in Arts, Entertainment and Sports, 4.5% are in Business and Financial Operations, 2.7% are in Computers and Mathematics, 6.0% are in Education, Training and Libraries, 3.3% are in Healthcare Practitioners and Technicians, 0.9% are in Healthcare Support, 0.1% are in Life, Physical and Social Sciences, 11.8% are in Management, 15.8% are in Office and Administrative Support.

0.7% are in Community and Social Services, 5.4% are in Food Preparation and Serving, 0.2% are in Legal Services, 1.6% are in Protective Services, 9.9% are in Sales and Related Services, 2.5% are in Personal Care Services.

3.3% are in Building and Grounds Maintenance, 8.2% are in Construction and Extraction, 0.1% are in Farming, Fishing and Forestry, 4.9% are in Maintenance and Repair, 8.1% are in Production, 6.4% are in Transportation and Moving.

For the civilian employed population age 16 and over in the United States, it is estimated that they are employed in the following occupational categories:

1.9% are in Architecture and Engineering, 1.9% are in Arts, Entertainment and Sports, 4.4% are in Business and Financial Operations, 2.4% are in Computers and Mathematics, 5.8% are in Education, Training and Libraries, 5.1% are in Healthcare Practitioners and Technicians, 2.3% are in Healthcare Support, 0.9% are in Life, Physical and Social Sciences, 9.6% are in Management, 14.2% are in Office and Administrative Support.

1.6% are in Community and Social Services, 5.4% are in Food Preparation and Serving, 1.1% are in Legal Services, 2.2% are in Protective Services, 11.3% are in Sales and Related Services, 3.3% are in Personal Care Services.

3.9% are in Building and Grounds Maintenance, 6.0% are in Construction and Extraction, 0.7% are in Farming, Fishing and Forestry, 3.4% are in Maintenance and Repair, 6.5% are in Production, 6.1% are in Transportation and Moving.

## Executive Summary

### Radius 2: BRASELTON, GA 30517, 0.00 - 3.00 Miles, Total

---



- Currently, it is estimated that 4.0% of the population age 25 and over in this area had earned a Master's Degree, 1.6% had earned a Professional School Degree, 0.3% had earned a Doctorate Degree and 13.9% had earned a Bachelor's Degree.

In comparison, for the United States, it is estimated that for the population over age 25, 7.0% had earned a Master's Degree, 1.9% had earned a Professional School Degree, 1.1% had earned a Doctorate Degree and 17.4% had earned a Bachelor's Degree.

---



- Most of the dwellings in this area (87.7%) are estimated to be Owner-Occupied for the current year. For the entire country the majority of the housing units are Owner-Occupied (66.8%).

The majority of dwellings in this area are estimated to be structures of 1 Unit Detached for the current year. In the United States, the majority of dwellings are estimated to be structures of 1 Unit Detached for the same year.

The majority of housing units in this area (48.3%) are estimated to have been Housing Unit Built 2000 or later for the current year.

The majority of housing units in the United States (16.2%) are estimated to have been Housing Unit Built 1970 to 1979 for the current year.

## Executive Summary

### Radius 3: BRASELTON, GA 30517, 0.00 - 5.00 Miles, Total

---



- The population in this area is estimated to change from 26,475 to 48,521, resulting in a growth of 83.3% between 2000 and the current year. Over the next five years, the population is projected to grow by 16.6%.

The population in the United States is estimated to change from 281,421,906 to 309,038,974, resulting in a growth of 9.8% between 2000 and the current year. Over the next five years, the population is projected to grow by 4.1%.

The current year median age for this area is 33.6, while the average age is 33.5. Five years from now, the median age is projected to be 34.5.

The current year median age for the United States is 37.0, while the average age is 37.7. Five years from now, the median age is projected to be 37.8.

Of this area's current year estimated population:

85.0% are White Alone, 6.8% are Black or African Am. Alone, 0.3% are Am. Indian and Alaska Nat. Alone, 1.5% are Asian Alone, 0.1% are Nat. Hawaiian and Other Pacific Isl. Alone, 4.3% are Some Other Race, and 1.9% are Two or More Races.

Of the United States's current year estimated population:

72.3% are White Alone, 12.4% are Black or African Am. Alone, 0.9% are Am. Indian and Alaska Nat. Alone, 4.4% are Asian Alone, 0.2% are Nat. Hawaiian and Other Pacific Isl. Alone, 6.8% are Some Other Race, and 3.0% are Two or More Races.

This area's current estimated Hispanic or Latino population is 9.4%, while the United States current estimated Hispanic or Latino population is 15.8%.

---



- The number of households in this area is estimated to change from 8,784 to 15,620, resulting in an increase of 77.8% between 2000 and the current year. Over the next five years, the number of households is projected to increase by 15.2%.

The number of households in the United States is estimated to change from 105,480,101 to 116,136,617, resulting in an increase of 10.1% between 2000 and the current year. Over the next five years, the number of households is projected to increase by 4.1%.

---



- The average household income is estimated to be \$80,953 for the current year, while the average household income for the United States is estimated to be \$71,071 for the same time frame.

The average household income in this area is projected to change over the next five years, from \$80,953 to \$87,342.

The average household income in the United States is projected to change over the next five years, from \$71,071 to \$77,465.

The current year estimated per capita income for this area is \$26,139, compared to an estimate of \$27,034 for the United States as a whole.

---

## Executive Summary

### Radius 3: BRASELTON, GA 30517, 0.00 - 5.00 Miles, Total



■ For this area, 49.7% of the population is estimated to be employed and age 16 and over for the current year. The employment status of this labor force is as follows:

0.0% are in the Armed Forces, 67.3% are employed civilians, 2.3% are unemployed civilians, and 30.3% are not in the labor force.

For the United States, 47.3% of the population is estimated to be employed and age 16 and over for the current year. The employment status of this labor force is as follows:

0.5% are in the Armed Forces, 61.0% are employed civilians, 4.1% are unemployed civilians, and 34.4% are not in the labor force.

For this area, 49.7% of the population is estimated to be employed and age 16 and over for the current year. The occupational classifications are as follows:

28.3% have occupation type blue collar, 58.0% are white collar, and 13.7% are Service & farm workers.

For the United States, 47.3% of the population is estimated to be employed and age 16 and over for the current year. The occupational classifications are as follows:

22.1% have occupation type blue collar, 60.2% are white collar, and 17.6% are Service & farm workers.

For the civilian employed population age 16 and over in this area, it is estimated that they are employed in the following occupational categories:

1.6% are in Architecture and Engineering, 1.2% are in Arts, Entertainment and Sports, 4.7% are in Business and Financial Operations, 2.4% are in Computers and Mathematics, 6.5% are in Education, Training and Libraries, 3.0% are in Healthcare Practitioners and Technicians, 1.6% are in Healthcare Support, 0.2% are in Life, Physical and Social Sciences, 11.4% are in Management, 15.2% are in Office and Administrative Support.

0.8% are in Community and Social Services, 4.3% are in Food Preparation and Serving, 0.3% are in Legal Services, 1.7% are in Protective Services, 10.7% are in Sales and Related Services, 2.3% are in Personal Care Services.

3.6% are in Building and Grounds Maintenance, 8.4% are in Construction and Extraction, 0.1% are in Farming, Fishing and Forestry, 4.5% are in Maintenance and Repair, 7.6% are in Production, 7.8% are in Transportation and Moving.

For the civilian employed population age 16 and over in the United States, it is estimated that they are employed in the following occupational categories:

1.9% are in Architecture and Engineering, 1.9% are in Arts, Entertainment and Sports, 4.4% are in Business and Financial Operations, 2.4% are in Computers and Mathematics, 5.8% are in Education, Training and Libraries, 5.1% are in Healthcare Practitioners and Technicians, 2.3% are in Healthcare Support, 0.9% are in Life, Physical and Social Sciences, 9.6% are in Management, 14.2% are in Office and Administrative Support.

1.6% are in Community and Social Services, 5.4% are in Food Preparation and Serving, 1.1% are in Legal Services, 2.2% are in Protective Services, 11.3% are in Sales and Related Services, 3.3% are in Personal Care Services.

3.9% are in Building and Grounds Maintenance, 6.0% are in Construction and Extraction, 0.7% are in Farming, Fishing and Forestry, 3.4% are in Maintenance and Repair, 6.5% are in Production, 6.1% are in Transportation and Moving.

## Executive Summary

### Radius 3: BRASELTON, GA 30517, 0.00 - 5.00 Miles, Total

---



- Currently, it is estimated that 4.3% of the population age 25 and over in this area had earned a Master's Degree, 1.3% had earned a Professional School Degree, 0.3% had earned a Doctorate Degree and 15.0% had earned a Bachelor's Degree.

In comparison, for the United States, it is estimated that for the population over age 25, 7.0% had earned a Master's Degree, 1.9% had earned a Professional School Degree, 1.1% had earned a Doctorate Degree and 17.4% had earned a Bachelor's Degree.

---



- Most of the dwellings in this area (86.8%) are estimated to be Owner-Occupied for the current year. For the entire country the majority of the housing units are Owner-Occupied (66.8%).

The majority of dwellings in this area are estimated to be structures of 1 Unit Detached for the current year. In the United States, the majority of dwellings are estimated to be structures of 1 Unit Detached for the same year.

The majority of housing units in the United States (16.2%) are estimated to have been Housing Unit Built 1970 to 1979 for the current year.

The majority of housing units in this area (46.2%) are estimated to have been Housing Unit Built 2000 or later for the current year.